

A

B

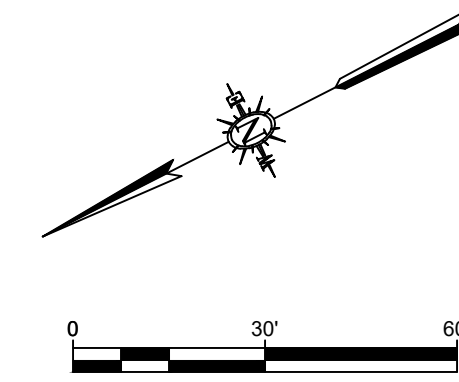
C

D

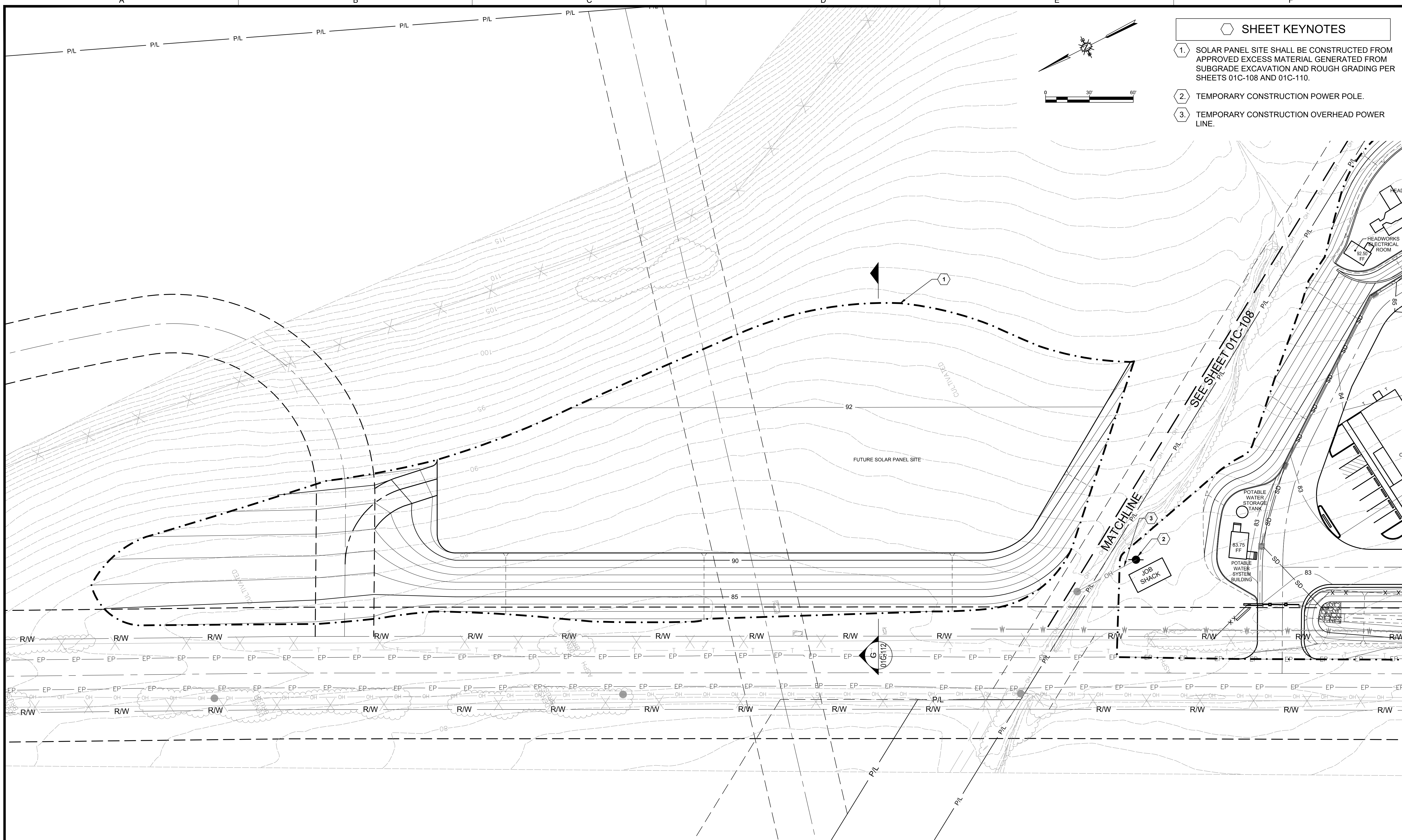
E

F

P/L P/L P/L P/L P/L P/L P/L P/L



- SHEET KEYNOTES**
1. SOLAR PANEL SITE SHALL BE CONSTRUCTED FROM APPROVED EXCESS MATERIAL GENERATED FROM SUBGRADE EXCAVATION AND ROUGH GRADING PER SHEETS 01C-108 AND 01C-110.
 2. TEMPORARY CONSTRUCTION POWER POLE.
 3. TEMPORARY CONSTRUCTION OVERHEAD POWER LINE.



Path: W:\3.0 Projects\Cayucos\Design Phase\6.0 Working Files\CAD File Name: 191009_CSMP-SPGrading.dwg Plot Date: October 9, 2019 - 4:19 PM CADD User: Paul D'Santi

REV	DATE	BY	DESCRIPTION

WARNING

IF THIS BAR DOES NOT MEASURE 1" THEN DRAWING IS NOT TO SCALE.

DESIGNED	AR
DRAWN	PMD
CHECKED	DW
SCALE	1"=30'

WSC
WATER SYSTEMS CONSULTING, INC.

805 AEROVISTA PARK, SUITE 201
 SAN LUIS OBISPO, CA 93401
 PH: (805)457-8833 FAX: (805)888-2764



APPROVED:

[Signature] 5-30-19
 BOARD PRESIDENT DATE

REVIEWED BY CSD:

[Signature] 5-30-19
 DISTRICT MANGER DATE

CAYUCOS SUSTAINABLE WATER PROJECT
 CAYUCOS WATER RESOURCE RECOVERY FACILITY
 01 SITEWORK

ROUGH GRADING AND DRAINAGE PLAN 2

DRAWING NO.
01C-109

SHEET 5 OF 15
 PROJECT #